

COOKOLOGY

Standard and Curved Glass Cooker Hood Instruction Manual

CONTENTS

3.....	Important Safety Notes
5.....	Feature
6.....	Installation
10.....	Speed adjustment
11.....	Maintenance
12.....	Trouble Shooting

1. IMPORTANT SAFETY NOTES – Read before Installing

This appliance must not be used by Children under 8. Children Over 8 and/or Persons with reduced physical, sensory or mental capabilities can only use the appliance if they are given supervision and are instructed in the safe use of the item and understand the hazards involved. Children must not play with the appliance. This also applies to Cleaning and User Maintenance.

Upon delivery this item needs to be carefully inspected and any damage needs to be reported before installation. If the Electricity Supply Cord is damaged, it must be replaced by the manufacturer, its service agent or similarly qualified persons in order to avoid a hazard.

Please Note:

- Only house the extractor in rooms with adequate ventilation. Remember that the extractor is powerful and whatever air is extracted needs to be replaced.
- Do not tile the extractor in. It should be removable for service or maintenance.
- There is a fire risk if cleaning is not carried out in accordance with the instructions.
- Do not use silicone sealant to secure the hood to the wall.
- Do not flambé under the range hood.
- You must be able to isolate the extractor from the mains electrical supply after installation.
- CAUTION: Accessible parts may become hot when used with cooking appliances.
- The air must not be discharged into a flue that is used for exhausting fumes from appliances burning gas or other fuels.
- The minimum distance between your cook top and lowest part of the hood needs to be 65cm.
- Do not vent the extractor into an attic or loft space
- Keep your children from using the cooker hood.

- Your cooker hood is for domestic use only, not suitable for barbecues, fires or commercial use.
- Any installation work must be carried out by a qualified electrician.
- The cooker hood and its filter mesh should be cleaned regularly in order to keep the appliance in good working order.
- Before cleaning, always ensure that you have switched your cooker hood off.
- Clean the cooker hood according to the instruction manual be careful when leaving your cook top on for a prolonged amount of time to avoid starting a fire.
- Do not use fire to dry your cooker hood.
- If there is a fault with your cooker hood, please call us.
- Before installation and usage read all the instructions and make sure that the voltage (V) and the frequency (Hz) indicated on your cooker hood are exactly the same as the voltage (V) and the frequency (Hz) in your home.
- In order to get the most out of your cooker hood, please read the instruction manual before installing & using, and keep it in a safe place.

2. FEATURES

- The cooker hood uses high quality materials, and features a streamlined design.
- Equipped with a large power low noise electric motor and centrifugal leaf, it produces strong suction with level noise. The non-stick grease filter makes it easy to clean.
- The isolated low voltage circuit board control, (12vAC input), makes the lights safer.
- A Special wind tunnel construction and oil collector design means dirt will be quickly absorbed.

3. INSTALLATION

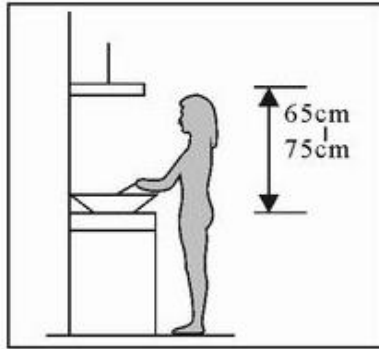
IMPORTANT: Any installation work must be carried out by a qualified electrician or competent person. YOU WILL HAVE TO DECIDE BEFORE INSTALLING YOUR COOKER HOOD WHETHER TO USE IT IN EXTRACTION MODE OR RECIRCULATION MODE.

We recommend that at least two people install this hood. Before installation and usage read all the instructions and make sure that the voltage (V) and the frequency (Hz) indicated on the rating plate are exactly the same as the voltage and frequency in your home. The rating plate can be found behind the grease filter.

- The manufacturer declines all responsibility in the event of the installer failing to observe all the accident prevention regulations in force, which are necessary for normal use and the regular operation of the electric system.
- **YOUR COOKER HOOD IS INTENDED FOR FITTED AND PERMANENT INSTALLATION.**
- The cooker hood's power cable must be fitted upstream from the electrical connection, using an omni-polar switch with a contact distance of at least 3 mm.
- **THE FUSE MUST BE RATED AT 3 AMPS.**
- **WARNING: THIS APPLIANCE MUST BE EARTHED.** It should only be connected by a competent person, using fixed wiring via a double pole switched fused spur outlet. (UK ONLY)
- We recommend that the appliance is connected by a qualified electrician, who is a member of the N.I.C.E.I.C. and who will comply with the I.E.E. and local regulations. The wires in the mains lead are coloured in accordance with the following UK code:
 - Blue = Neutral
 - Brown = Live
 - Green/Yellow = Ground

Fitting a Standard Chimney Cooker Hood without Glass:

- 1) The cooker hood should be placed at a distance of 65-75cm (26-30inch) from the cooking surface for best performance. See Pic 1.



Pic1

- 2) Install the mounting hooks at a suitable place once the installation height has been calculated. Bear in mind, the position of the inside chimney bracket is where the chimney will be.

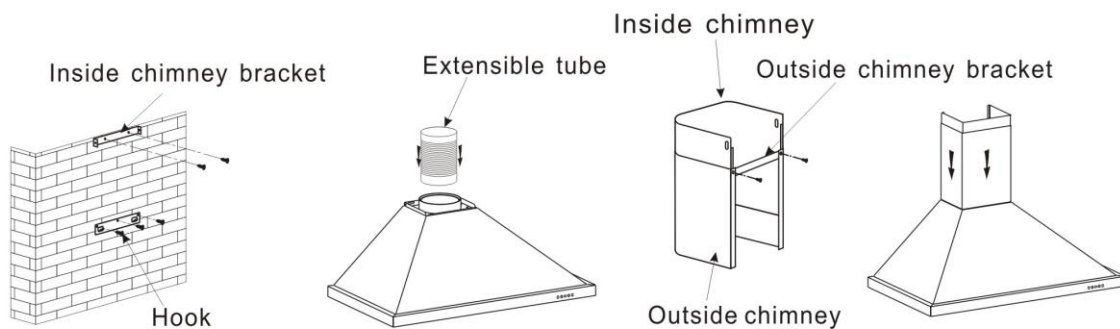
- 3) Fix the outside chimney bracket on the outside chimney, and make sure that the inside chimney can be

adjusted up and down freely. Afterwards, install the ducting tube on the cooker hood. See Pic 2-3.

- 4) Mount the cooker hood on the hook. See Pic 4.

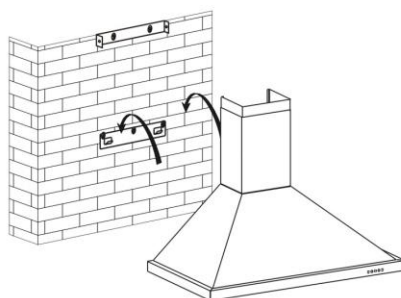
- 5) Adjust the height of the inside chimney up to the inside fixing bracket and then screw it into place. See Pic 5.

Note: The two safety vents are positioned on the back casing, with diameter of 6mm.

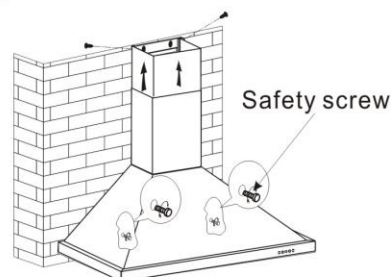


Pic2

Pic3



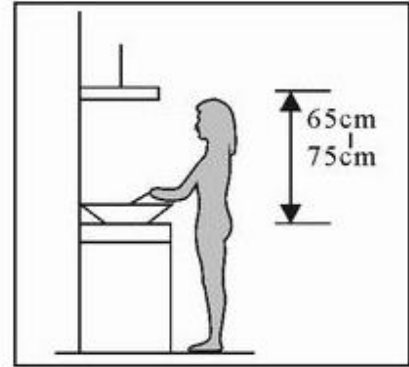
Pic4



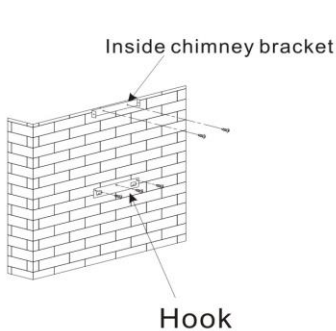
Pic5

Fitting a Curved Glass Cooker Hood:

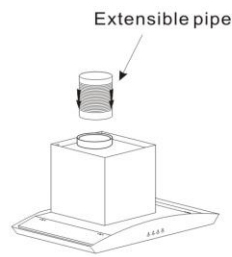
- 1) The cooker hood should be placed at a distance of 65-75cm (26-30inch) from the cooking surface for the performance. Pic 1.
- 2) Install the mounting hooks at a suitable place once the installation height has been calculated. Bear in mind, the position of the inside chimney bracket is where the chimney will be.
- 3) Mount the cooker hood on the mounting hook. See Pic 3.
- 4) Attach the glass as per Pic 4 and use the screws to fix the glass gently in place. Don't Over Tighten.
- 5) Fix the outside chimney bracket on the outside chimney, and make sure that the inside chimney can be adjusted up and down freely. Afterwards, install the ducting tube on the cooker hood. See Pic 4-5.
- 6) Put the two chimneys together onto the cooker hood body, and Adjust the height of the inside chimney up to the inside fixing bracket and then screw it into place. See Pic 5.



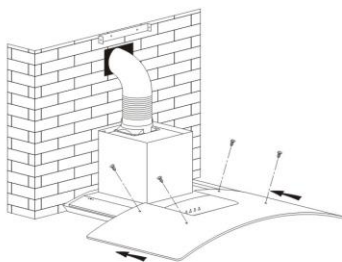
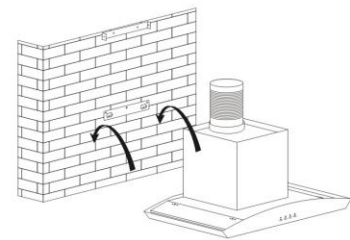
Pic1



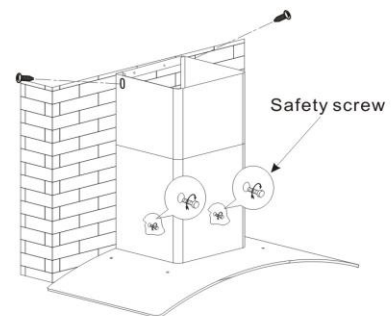
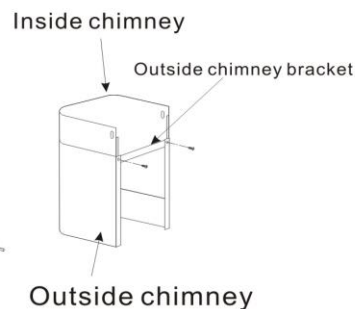
Pic 2



Pic 3



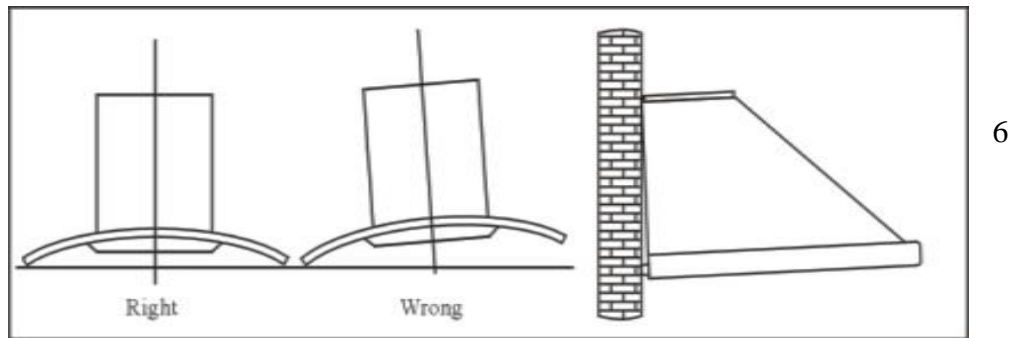
Pic 4



Pic 5

Note: The two safety vents are positioned on the back casing, with diameter of 6mm.

- 7) After installation, make sure that the extractor is level to avoid grease collection at one end.



Pic5

Fitting the carbon filters:

If the appliance is being used to be used in recirculation mode then it is necessary to fit carbon filters. This will help to absorb unpleasant odours caused by cooking.

IMPORTANT: BEFORE ATTEMPTING TO FIT OR REMOVE THE CARBON FILTERS, YOU MUST ENSURE THAT YOU HAVE DISCONNECTED THE COOKER HOOD FROM YOUR MAINS SUPPLY.

- 1) Remove the Grease Filter
- 2) Hook Genuine Carbon Filters over the pins that are located at the end of the motor.
- 3) Turn the carbon filter anticlockwise, until you feel it click into place.
- 4) Repeat this process for the second carbon filter. You need to place a carbon filter at either end of the motor.
- 5) Refit the grease filters.
- 6) The carbon filters should be replaced every 3-9 months or if they show signs of damage.

4. SPEED ADJUSTMENT

There are several buttons on the control panel, which perform Separate functions.

= Low speed

= Medium speed

= High speed

= Light ON/OFF button

IMPORTANT: IDEALLY YOU SHOULD SWITCH ON YOUR HOOD TEN MINUTES BEFORE YOU START TO COOK, OR AT THE VERY LEAST WHEN YOU BEGIN COOKING. YOU SHOULD ALSO RUN YOUR HOOD FOR TEN MINUTES AFTER YOU HAVE FINISHED COOKING.

7. MAINTENANCE

General Cleaning:

- Clean the external parts of your cooker hood with mild liquid detergent and a new damp cloth.
- Never use abrasive powder, corrosive solvents or brushes.
- Never insert pointed objects into the motor's protective grid.
- Only clean the control panel and grease filter grill with mild liquid detergents and a new damp cloth.
- If you are using the appliance in recirculation mode, then be sure to replace the carbon filters at the recommended intervals
- A build-up of grease could cause a fire hazard.
- Never attempt to clean the area above the grease filter as there are Sharp Edges.
- **IMPORTANT:** You should regularly use a good quality stainless steel cleaner to maintain the shine and finish on the stainless steel areas of your cooker hood.
- This will help to leave a silicone water-resistant film to protect the stainless steel surfaces and keep them in good condition for the life of the product.

The grease filter:

- Your cooker hood includes a grease filter which helps to absorb grease particles to protect your kitchen and furniture from greasy residues.
- This aluminium filter may become flammable if it becomes saturated with this greasy residue.
- To prevent this fire hazard, the filter should be cleaned regularly.
- Depending on use, this should be done every 10-15 days or at least once a month, using hot water and normal washing-up detergent.
- **DO NOT WASH THE GREASE FILTER IN A DISHWASHER.**
- Soak the grease filter in hot water and washing up liquid for at least 5 minutes (or longer if the grease build up is severe)
- Rinse it off thoroughly with hot water. Repeat the process if required.
- Refit the grease filter once it has **COMPLETELY** dried.

8. TROUBLE SHOOTING

Fault	Cause	Solution
Light on, but motor does not work	The Fan is blocked	Get rid of the blockage
	The capacitor is damaged	Replace capacitor
	The motor jammed - bearings damaged	Replace motor
	Bad smell from the motor	Replace motor
Light does not work, motor does not work	Besides the above, check the following:	
	Light damaged	Replace lights
	Power cord looses	Connect the wires as per the electric diagram
Oil leakage	One way valve and the air ventilation entrance are not tightly sealed	Take down the one way valve and seal with glue
	Leakage from the connection of U-shaped section and cover	Take U-shaped section down and seal with soap or paint
Shake of the body	The Fan is damaged and causes shaking	Replace the Fan
	The motor is not tightly hung	Lock the motor tightly
	The body is not tightly hung	Fix the body tightly
Insufficient suction	The distance between the body and the gas top too long	Readjust the distance
	Too much ventilation from open doors or windows	Choose a new place and resemble the machine
The machine inclines	The fixing screw not tight enough	Tighten the hanging screw and make it horizontal
	The hanging screw not tight enough	Tighten the hanging screw and make it horizontal

ENVIRONMENTAL PROTECTION:

This product is marked with the symbol on the selective sorting of waste electronic equipment. This means that this product must not be disposed of with household waste but must be supported by a system of selective collection in accordance with Directive 2002/96/EC. It will then be recycled or dismantled to minimize impacts on the environment, electrical and electronic products are potentially dangerous for the environment and human health due to the presence of hazardous substances.

For more information, please contact your local or regional authorities.

Note:

- a. In order to reduce the environmental impact (e.g. energy use) of the cooking process, please be sure that your product is installed according to the user manual, keep the operation place ventilated, keep the extraction duct be direct and short as possible as it can be.
- b. We suggest switch the motor off within 10 minutes after finishing the cooking process.
- c. Please be sure to dismantle related components according to the user manual when maintaining.