

COOKOLOGY

Built-under Freezer **Instruction Manual**

MODEL CBUFZ600



Contents

Cautions-----	1~2
Diagram-----	3
Preparation-----	4~5
Operation-----	6
Defrosting,cleaning and de-commissioning-----	7
Trouble shooting-----	8

Cautions

Disposal of the old appliance

Before disposing an old appliance, please make sure it's inoperative and safe. Unplug the appliance and remove or destroy all of the springs, latches, or bolt-locks in order to avoid the risk of child entrapment.

It must be noted that the refrigeration system contains insulating gases and refrigerants, which require specialized waste disposal. The valuable materials contained in a refrigerator can be recycled. Contact your local waste disposal center for proper disposal of an old appliance and contact your local authority or your dealer if you have any question. Please ensure that the pipe work of your refrigerator does not get damaged prior to being picked up by the relevant waste disposal center, and contribute to environmental awareness by insisting on an appropriate, any-pollution method of disposal.

Disposal of the packaging of your new appliance

All the packaging materials employed in the package of your new appliance may be disposed without any danger to the environment.

The cardboard box may be broken or cut into smaller pieces and given to a waste paper disposal service. The wrapping foil is made of polyethylene and the polyethylene pads and stuffing contain no fluorochloric hydrocarbon.

All these valuable materials may be taken to a waste collecting center and used again after adequate recycling.

Consult your local authorities for the name and address of the waste materials collecting centers and waste paper disposal services nearest to your house.

Safety Instructions and Warnings

Before starting the appliance, read the information given in the User's Guide carefully. The User's Guide contains very important observations relating to the assembly, operation and maintenance of the appliance.

Keep the User's Guide in a safe place and remember to hand it over to the subsequent owner, if you ever sell the appliance.

The manufacturer does not accept responsibility for any damages that may arise due to non-observation of the following instruction.

*Damaged appliances are not to be put into operation. In case of doubt, consult your supplier.

CAUTIONS

- Connection and installation of the appliance are not to be carried out in strict compliance with the relevant instructions set out in the User's Guide.
- For the purpose of safety, the appliance must be properly earthed in accordance with specifications.
- Always remember to unplug the appliance before cleaning. To disconnect the appliance, pull at the plug itself, not the cord.
- Keep alcoholic beverages in airtight bottles or containers and always store in an upright position. In addition, do not store any explosive substances inside the appliance. Danger of explosion!
- Do not damage any parts of the appliance that carry refrigerant by piercing or perforating the appliance cabinet with sharp or pointed items, crushing or twisting any tubes, or scraping the coatings off the surfaces. If the refrigerant comes into contact with eyes, it may result in serious eye injuries.
- Do not obstruct or cover the ventilation grille of the appliance.
- In no case should Children must never be allowed to sit on the drawers or hang on the door.
- Should If you have bought your new fridge/freezer to replace an old appliance, please make sure that all existing latch-or bolt-locks on the old appliance are destroyed, before you dispose it.
- This will ensure that a child cannot get trapped inside.
- Please have the old appliance dispose of the old appliance using a company specialised in environmental protection, as the appliance may contain harmful components in the refrigerant and this must be removed with special equipment.
- Please check with your retailer or with your local authority.
- Ensure that the refrigerating system containing the refrigerant (especially the heat exchanger at the rear) is not damaged during transportation to the disposal or collection site, so that you can be sure to ensure that the refrigerant does not leak out. Details concerning the type of refrigerating/isolating agent used can be found on the appliance's rating plate.
- Warning: Keep ventilation openings in the appliance cabinet and location clear of obstruction.
- Warning: Do not use mechanical devices or other means to accelerate the defrosting process, other than those recommended by the manufacturer.
- Warning: Do not damage the refrigerant circuit.
- Warning: Do not use electrical appliances inside the food storage of the appliance.
- It is necessary to have The plug must be accessible after installation.
- If the power cord is damaged, it must be replaced by a supplied cord or assembly available from the retailer or its service agent.
- Connection of power supply and installation should be conducted carried out by qualified personnel, in accordance with instructions in this manual.
- Only the tools regulated by the manufacturer can be used for defrosting.

SPECIFICATIONS

- This appliance is designed for food refrigeration, ice making and frozen food storage. It is intended strictly for household use. If using it for industrial or commercial purpose, be sure to observe the relevant norms and regulations. Use for industrial or commercial purposes will invalidate the warranty.
- The refrigerating circuit is leak-proof.

Refrigerator Diagram



1. Control Panel

2. Drawers

This diagram may vary slightly with the layout of the refrigerator you have just purchased due to technical improvements.

Preparation

Unpacking

Remove all packing materials.

Check attachments and materials

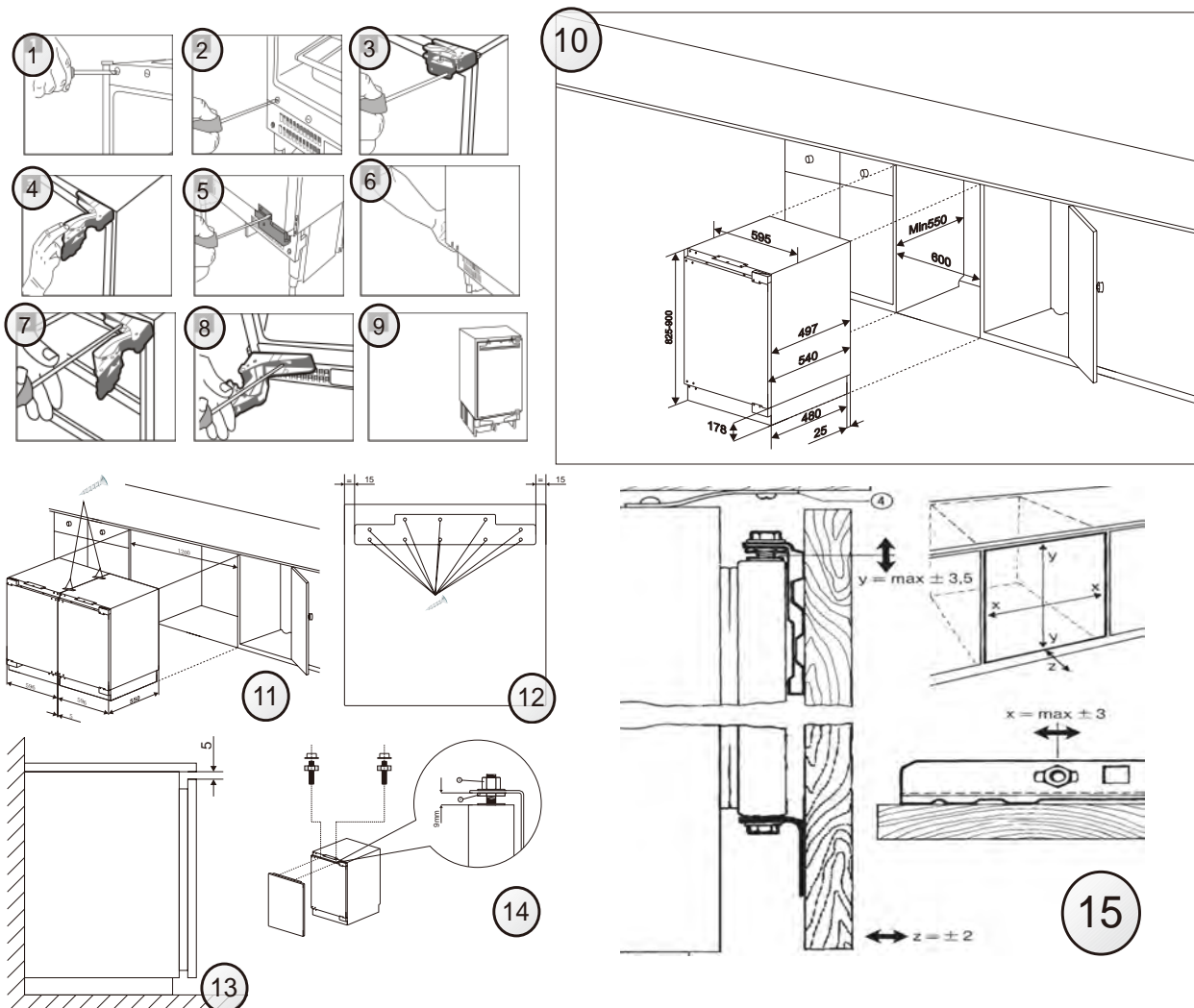
Checking should be conducted with reference to the Packing List. Contact the local distributor if discrepancies are found.

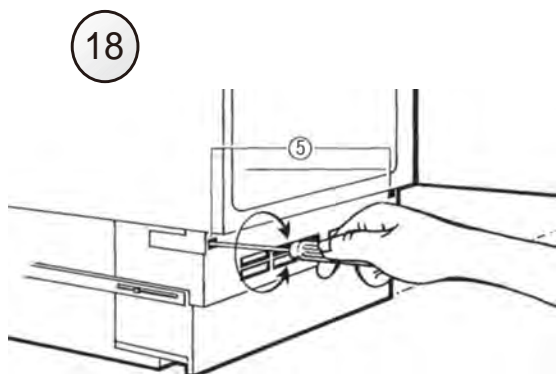
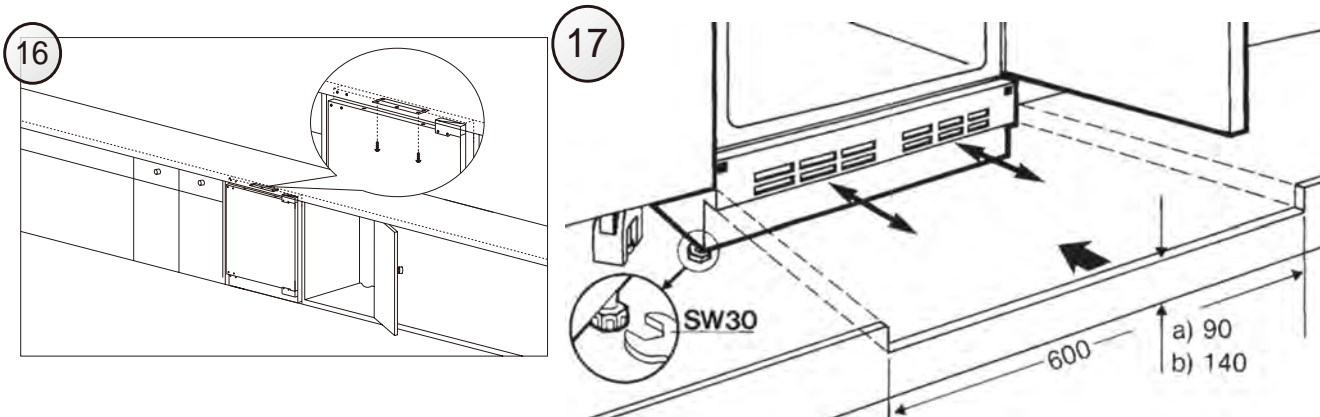
Ensure proper location of the freezer

Clean the refrigerator before use.
(See the following section "Cleaning")

Idle time

After the refrigerator has been sited and cleaned, let it stand for more than 30 minutes before connecting the power source.





DOOR REVERSAL

1. Unplug the appliance before reversing the door opening direction.
2. Remove food from the appliance.
3. Remove caps on the front of the refrigerator body (Fig. 1, Fig 2).
4. Remove the two screws, which attach the upper hinge to the appliance door (Fig. 3). Take special care and hold the appliance door vertically.
5. Holding the door, swing the upper door hinge away from the door using the other hand (Fig. 4).



Be especially careful during this step, as the hinge may close and cause injury.

6. Remove the two screws, which attach the lower hinge to the appliance door (Fig. 5). Take special care and hold the appliance door with the other hand.
7. Holding the door, swing the lower door hinge away from the door using the other hand, then detach the door from the appliance body (Fig. 6).
8. Remove the two screws, which attach the upper hinge to the body and the two screws holding the lower hinge to the appliance body (Fig. 7).
9. Screw the upper and lower hinge on the opposite side of the appliance body using suitable screws (Fig. 8). Upper hinge should be mounted on the other side of the appliance as the lower hinge. The lower hinge should be mounted on the other side of the appliance as the upper hinge.
- With the hinges open, hold the door parallel to the appliance body and screw the hinges to the door using suitable screws while taking proper care.
10. Make sure that the door is properly aligned with the appliance body (Fig. 9).

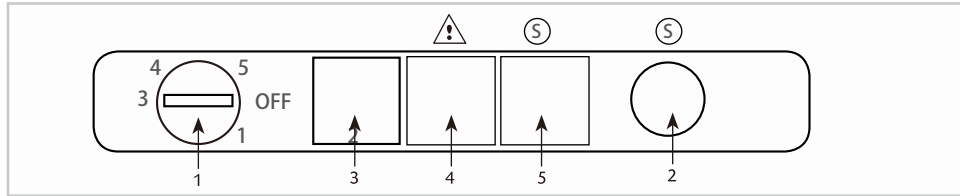
INSTALLATION OF THE APPLIANCE

Installation of the appliance should be performed by a qualified installer. The appliance should be placed in furniture case (Fig. 10). Once the appliance is placed correctly, adjust the height of the appliance by turning the 4 adjustable feet as appropriate. If necessary, adjacent appliances should be braced with a bracket fixed by screws and fitted in furniture (Fig. 11). There is a special strip at the top of the appliance. Attach it to the underside of the cabinet with appropriate screws supplied with the assembly kit (Fig. 16). Decorative strip must not block the vents located in the bottom casing unit, the strip must be cut to size (Fig. 17). The depth of the bottom casing unit can be adjusted by moving it forwards or backwards. Once properly adjusted, tighten the mounting screws (located in the openings on both sides of the casing unit) with a cross-head screwdriver. This will permanently attach the casing unit (Fig. 18).

FITTING FURNITURE BOARD TO APPLIANCE DOOR

Place the mounting bracket on furniture board and position it accordingly (Fig. 12). The distance between the furniture board and the underside of the worktop should be 5 mm (Fig. 13). Attach the mounting bracket using suitable screws supplied in the installation kit. Pull out the mounting bracket cover and screw in the two special screws (2) in the appliance doors (Fig. 14). Attach furniture board with the fixed mounting bracket to the appliance door. Secure the furniture board with suitable nuts (item 3, Figure 14). Make sure the furniture board assembly is positioned correctly relative to the appliance (Fig. 15). Using the supplied screws, attach the furniture board assembly to the bottom of the appliance door (Fig. 15). Replace the mounting bracket cover in its original location.

Operation



1. Thermostat Dial

The thermostat automatically keeps the internal temperature at a constant level. The temperature is regulated by the thermostat dial, located on the freezer control panel. To change the temperature, turn the dial anti-clockwise from 1 (highest temperature) to 5 (coldest temperature). We recommend that you start with the appliance set to position 3.

2. Super freeze switch

When fast freezing is needed, turn on the fast freezing function button with the indication that yellow light is on. After 24 hours, the function will be switched off automatically. During fast freezing, press and hold the fast freezing button for 3 seconds, then the function will be manually switched off immediately.

3. Power indicator light

This green light will illuminate when the freezer is switched on.

4. Over temperature indicator light

This red light will illuminate when the temperature inside the freezer is too high. This may illuminate after the door has been opened, or when fresh food is added and should switch off again once the temperature within the freezer has stabilized.

5. Super freeze indicator light

This yellow light will illuminate when the super freezer function has been switched on with the super freeze switch (2).

USE

- The freezer compartments are designed to store frozen food.
- Never put warm or hot food in the freezer, allow them to cool fully first
- Follow the instructions on the packing for storage of frozen food. If no information is provided, foods should not be stored for more than three months after the purchase date.
- Never put sparkling drinks or bottles of liquid in the freezer as they can explode.

Defrosting-Cleaning-De-commissioning

Cleaning

The freezer should be cleaned regularly to prevent the formation of bad odors.

- * Disconnect the power before cleaning the freezer.
- * Do not use a hard brush, steel brush, detergent, gasoline or other solvents, hot water, acid or alkali for cleaning.
- * Wipe water drops on the surface of the freezer with a soft cloth.
- (1) Do not use excessive amounts of water for cleaning the freezer
- (2) Use a dry cloth to clean the switch, the lamp and the temperature controller
- * Always keep the rubber door seal clean
- * Clean the back and sides of the freezer regularly.

Cessation of Operation

If the power failure lasts for an extended period, unplug the refrigerator and clean the freezer as previously described.

Keep the door of freezer open when the power is turned off to prevent any food remaining in the compartment from producing bad odors.

Caution: It is recommended that the freezer is not turned off

Defrosting the freezer

After a period of operation, a layer of frost will form on the surface of the freezer. Additional electricity will be consumed if this layer becomes too thick. The defrosting process must be carried out when a thick layer of frost has been formed.

To defrost the freezer, first disconnect the power by unplugging the refrigerator, and then remove any food from the refrigerator and place it in a cool place. Use a plastic defrosting tool.

After ice and frost are melted, wipe up the inside of the freezer compartment.

Caution: Never use a metal tool or electrical heater for defrosting.

After the defrosting is completed, plug in the refrigerator and it starts operation again.

Questions and Answers

If you have any problems with your appliance, you should check the troubleshooting prior to calling Customer Care to prevent unnecessary service calls and potential cost.

If the appliance is not working

- Check there is power to the appliance:
- The house fuses are intact and the fuse in the plug has not blown.
- The thermostat is not set to 0 (off position).
- The plug socket is functioning fine. T
- The temperature of the room is adequate (10 C° or above).

The appliance is working, but not very well

- The appliance is not overloaded.
- The thermostat is set to an appropriate temperature.
- The door is closing properly.
- The cooling system at the rear of the appliance is clean and free of dust, and not touching the rear wall.
- There is enough ventilation at the side and rear walls.
- The temperature of the room is adequate (10 C° or above).

The appliance is noisy

- The appliance is level and stable.
- The side and rear walls are clear, and there is nothing resting on the appliance.
- The cooling gas in the refrigerator will make a slight bubbling noise, even when the compressor is not running.

There is water in the lower part of the refrigerator compartment

- The drain hole in the channel at the back of the compartment is clear.

Manufacturer's Declaration

The manufacturer hereby declares that this product meets the re-quirements of the following European directives:

- Low Voltage Directive 2014/35/EC
- Electromagnetic Compatibility (EMC) Directive 2014/30/EC
- ErP Directive 2009/125/EC
- Directive RoHS 2011/65/EC

and has thus been marked with the symbol and been issued with the CE symbol and been issued with a declaration of compliance made available to market regulators.