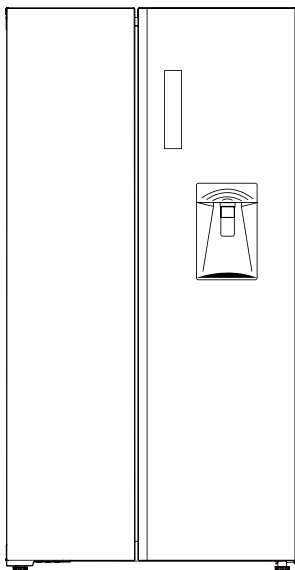


# COOKOLOGY

## Fridge freezer

USER'S MANUAL

CSBS548WDIX



UK  
CA

CE



Please register the warranty for this product on [www.Cookology.com](http://www.Cookology.com)







# Contents

<b>Important safety instructions .....</b>	<b>2</b>
<b>Environmental protection.....</b>	<b>5</b>
<b>Install Instruction.....</b>	<b>6</b>
Leveling feet.....	7
Leveling doors.....	7
Changing the light.....	7
Connecting the appliance.....	7
Moving the appliance.....	7
Tips for energy saving.....	8
<b>Product overview .....</b>	<b>9</b>
Parts and functions.....	9
<b>Operation Instructions .....</b>	<b>10</b>
Use and functions.....	10
How to use the water dispenser (optional).....	13
How to make ice (optional).....	13
Storing food.....	14
<b>Maintenance and cleaning.....</b>	<b>15</b>
<b>Troubleshooting.....</b>	<b>18</b>
<b>Appendix .....</b>	<b>20</b>
Special for new European standard .....	20

## Before switching on the appliance for the first time read the following safety hints!

- > This appliance is intended to be used in household and similar applications such as staff kitchen areas in shops, offices and other working environments; farm houses and by clients in hotels, motels and other residential type environments; bed and breakfast type environments; catering and similar non-retail applications.
- > This appliance is not intended for use by persons (including children) with reduced physical, sensory or mental capabilities, or lack of experience and knowledge, unless they have been given supervision or instruction concerning use of the appliance by a person responsible for their safety.

### Explanation of terms/symbols

	<b>DANGER</b> This symbol indicates that there are dangers to the life and health of persons due to extremely flammable gas.
	<b>WARNING</b> The signal word indicates a hazard with a medium level of risk which, if not avoided, may result in death or serious injury.
	<b>CAUTION</b> The signal word indicates a hazard with a low degree of risk which, if not avoided, may result in minor or moderate injury.
	<b>ATTENTION</b> The signal word indicates important information (e.g. damage to property), but not danger.

**IMPORTANT:** Pay particular attention to messages that contain the words **DANGER**, **WARNING** or **CAUTION**. These words are used to alert you to a potential hazard that can seriously injure you and others.

The instructions will tell you how to reduce the chance of injury and let you know what can happen if the instructions are not followed.

**ATTENTION:** These operating instructions are general. This means that certain functions apply to your refrigerator/freezer, while others do not.

We are constantly working on the further development and improvement of our appliance types and models. Therefore, we reserve the right to make changes to the design, equipment and accessories of all types and models without prior notice.

# IMPORTANT SAFETY INSTRUCTIONS

READ AND SAVE THESE INSTRUCTIONS!



## **WARNING: Risk of fire / flammable material**

Refrigerant and cyclopentane foaming material used for the appliance are flammable. Therefore, when the appliance is scrapped, it shall be kept away from any fire source and be recovered by a special recovering company with corresponding qualification other than be disposed by combustion, so as to prevent damage to the environment or any other harm



## **WARNING**

### **General Safety**

- > Children should be supervised to ensure that they do not play with the appliance.
- > If the supply cord is damaged, it must be replaced by the manufacturer, its service agent or similarly qualified persons in order to avoid a hazard.
- > Do not store explosive substances such as aerosol cans with a flammable propellant in this appliance.
- > The appliance has to be unplugged after use and before carrying out user maintenance on the appliance.
- > **WARNING:** Keep ventilation openings, in the appliance enclosure or in the built-in structure, clear of obstruction.
- > **WARNING:** Do not use mechanical devices or other means to accelerate the defrosting process, other than those recommended by the manufacturer.
- > **WARNING:** Do not damage the refrigerant circuit.
- > **WARNING:** Do not use electrical appliances inside the food storage compartments of the appliance, unless they are of the type recommended by the manufacturer.
- > **WARNING:** Please abandon the refrigerator according to local regulators for its use flammable blowing gas and refrigerant.
- > **WARNING:** When positioning the appliance, ensure the supply cord is not trapped or damaged.
- > **WARNING:** Do not locate multiple portable socket-outlets or portable power supplies at the rear of the appliance.
- > Do not use extension cords or ungrounded (two prong) adapters.
- > To avoid a hazard due to instability of the appliance, it must be fixed in accordance with the instructions.
- > The refrigerator must be disconnected from the source of electrical supply before attempting the installation of accessory. Ensure that the power cable is not trapped by the refrigerator. Do not step on the power cable.
- > For a freestanding appliance: this refrigerating appliance is not intended to be used as a built-in appliance.



## CAUTION

### Daily use

- > Do not pull the power cord when pulling the power plug of the refrigerator. Please firmly grasp the plug and pull out it from the socket directly.
- > To ensure safe use, do not damage the power cord or use the power cord when it is damaged or worn.
- > Please use a dedicated power socket and the power socket shall not be shared with other electrical appliances.
- > The power plug should be firmly contacted with the socket or else fires might be caused.
- > Please ensure that the grounding electrode of the power socket is equipped with a reliable grounding line.
- > Please turn off the valve of the leaking gas and then open the doors and windows in case of leakage of gas and other flammable gases.
- > Do not unplug the refrigerator and other electrical appliances considering that spark may cause a fire.
- > Do not use electrical appliances on the top of the appliance, unless they are of the type recommended by the manufacturer.
- > The gaps between refrigerator doors and between doors and refrigerator body are small, be noted not to put your hand in these areas to prevent from squeezing the finger. Please be gentle when close the refrigerator door to avoid falling articles.
- > Do not pick foods or containers with wet hands in the freezing chamber when the refrigerator is running, especially metal containers in order to avoid frostbite.
- > Do not allow any child to get into or climb the refrigerator; otherwise suffocation or falling injury of the child may be caused.
- > Do not place heavy objects on the top of the refrigerator considering that objectives may fall when close or open the door, and accidental injuries might be caused.
- > Do not put flammable, explosive, volatile and highly corrosive items in the refrigerator to prevent damages to the product or fire accidents.
- > Do not place flammable items near the refrigerator to avoid fires.
- > The refrigerator is intended for household use, such as storage of foods; it shall not be used for other purposes, such as storage of blood, drugs or biological products, etc.
- > Do not store beer, beverage or other fluid contained in bottles or enclosed containers in the freezing chamber of the refrigerator; or otherwise the bottles or enclosed containers may crack due to freezing to cause damages.



## WARNING

- > Connect to potable water supply only. (Suitable for ice cube maker) (\*)
- > To prevent children from being entrapped, the keys must be kept out of reach of children and not in the vicinity of chest freezer (or refrigerator) (suitable for products with locks).(\*)

**(\*): This feature varies depending on the model purchased.**



## WARNING

For EU standard:

This appliance can be used by children aged from 8 years and above and persons with reduced physical, sensory or mental capabilities or lack of experience and knowledge if they have been given supervision or instruction concerning use of the appliance in a safe way and understand the hazards involved. Children shall not play with the appliance. Cleaning and user maintenance shall not be made by children without supervision.

To avoid contamination of food, please respect the following instructions:

- Opening the door for long periods can cause a significant increase of the temperature in the compartments of the appliance.
- Clean regularly surfaces that can come in contact with food and accessible drainage systems.
- Clean water tanks if they have not been used for 48h; flush the water system connected to a water supply if water has not been drawn for 5 days. **(Note 1)(\*)**
- Store raw meat and fish in suitable containers in the refrigerator, so that it is not in contact with or drip onto other food.
- Two-star frozen-food compartments are suitable for storing pre-frozen food, storing or making ice-cream and making ice cubes. **(Note 2)(\*)**
- 1 star, 2 star and 3 star compartments are not suitable for the freezing of fresh food. **(note 3)(\*)**
- For appliances without a 4-star compartment: this refrigerating appliance is not suitable for freezing foodstuffs. **(note 4)(\*)**
- If the refrigerating appliance is left empty for long periods, switch off, defrost, clean, dry, and leave the door open to prevent mould developing within the appliance.

**Note 1,2,3,4:** Please confirm whether it is applicable according to your product compartment type.

**(\*):** This feature varies depending on the model purchased.



"4 star" symbol: Freezer at -18 °C or colder, and it has the ability of quick freezing a certain amount of food



"3 star" symbol: Freezer compartment at -18 °C or colder



"2 star" symbol: Freezer compartment at -12 °C or colder



"1 star" symbol: Freezer compartment with a target temperature and storage conditions of -6 °C



## CAUTION

**This product is not recommended for use with sockets or main switch with the A/GFCI function, otherwise it may cause false tripping.**

1. It's not pose a safety risk when tripped.
2. If tripping persists, it is recommended to replace the sockets or main switch without AFCI/GFCI function.



## WARNING

**Risk of child entrapment. Before you throw away your old refrigerator or freezer:**

- > Take off the doors.
- > Leave the shelves in place so that children may not easily climb inside.

# ENVIRONMENTAL PROTECTION

## Disposing of old electrical devices in an environmentally-friendly manner



This crossed-out wheeled bin symbol indicates that waste electrical and electronic products (WEEE) should be disposed of separately from the municipal waste stream.

Old electrical products can contain hazardous substances so correct disposal of your old appliance will help prevent potential negative consequences for the environment and human health. Your old appliance may contain reusable parts that could be used to repair other products, and other valuable materials that can be recycled to conserve limited resources.

## Package information



Packaging materials of the product are manufactured from recyclable materials in accordance with our National Environment Regulations. Do not dispose of the packaging materials together with the domestic or other wastes. Take them to the packaging material collection points designated by the local authorities.

### CAUTION

Refrigerant and cyclopentane foaming material used for the refrigerator are flammable. Therefore, when the refrigerator is scrapped, it shall be kept away from any fire source and be recovered by a special recovering company with corresponding qualification other than be disposed by combustion, so as to prevent damage to the environment or any other harm.



# INSTALL INSTRUCTION

## Before first use

Remove the exterior and interior packing, wipe the outside thoroughly with a soft dry cloth and the inside with a wet, lukewarm cloth.

Avoid placing the cabinet in a narrow recess or near any heat source, direct sunlight, or moisture.

Too small of a distance from adjacent items may result in the degradation of freezing capability and increased electricity costs. Allow over 100 mm of clearance at both sides and the top, and 50-75 mm at the back when installing the appliance.

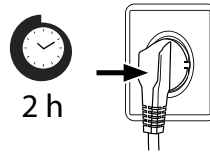
Before connecting your refrigerator to the power supply, check that the voltage stated on the rating label of your appliance corresponds to the voltage in your home. A different voltage could damage the appliance.

The appliance must be grounded. The manufacturer is not responsible for damages that may occur as a result of usage without grounding.

Notice: All dimensions in mm

## Connecting the appliance

After installing the product, please let it stay for more than 2 hours before turning on the power, otherwise it will lead to a decrease in cooling capacity or a damage to the product.

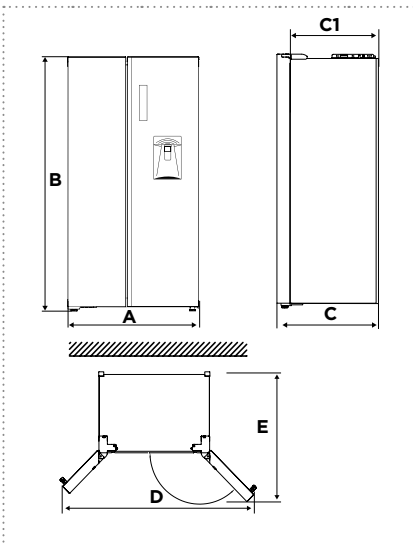


Allow the appliance to run empty for 24 hours so the compartment can cool to the appropriate temperature.

## CAUTION

The refrigerator should always be plugged into its own individual electrical outlet which has a voltage rating that matches the rating plate. When positioning the appliance, ensure the supply cord is not trapped or damaged.

## Space requirement diagram



A	B	C	C1	D	E
897	1765	706	600	1544	1035

## Ambient Temperature

Depending on the climate class, this refrigerator is intended to be used at an ambient temperature range as specified in the following table.

The product may not operate properly at temperatures outside of the specific range.

You can find the climate class on the product label.

Climate Class	Ambient Temperature
SN	+10 °C to +32 °C
N	+16 °C to +32 °C
ST	+16 °C to +38 °C
T	+16 °C to +43 °C

If you have any doubts regarding installation, please turn to the vendor, to our customer service or to the nearest Authorised Service Centre.

## ATTENTION

The cooling performance and power consumption of the refrigerator may be affected by the ambient temperature, the door-opening frequency, and



## Leveling feet

**To avoid vibration, the appliance must be leveled.**

If required, adjust the leveling feet to compensate for the uneven floor.

The front should be slightly higher than the rear to aid in door closing.

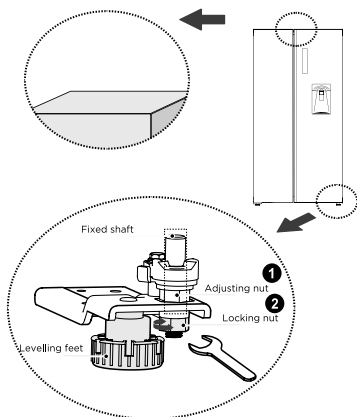
Leveling feet can be turned easily by tipping the cabinet slightly.

Turn the leveling feet counter clockwise  to raise the unit, clockwise  to lower it.

## Leveling doors

**If the doors are not at the same height, the door can be adjusted with a spanner.**

- A. Loosen locking nut **2** counterclockwise.
- B. Rotate the adjusting nut **1** counterclockwise to adjust the height of door.
- C. When the door is correctly aligned, tighten the locking nut **2** clockwise.



### **ATTENTION**

**Differences:** Due to technical changes and different models, some of the illustrations in this manual may differ from your model.

## Changing the light

Any replacement or maintenance of the LED lamps is intended to be made by the manufacturer, its service agent or similar qualified person.

**This product contains two light sources of energy efficiency class (G).**

## Connecting the appliance

After installing the appliance, connect the power plug into a socket outlet.

### **ATTENTION**

After connecting the power supply cord (or plug) to the outlet, wait 2 or 3 hours before you put food into the appliance. If you add food before the appliance has cooled completely, your food may spoil.

## Moving the appliance

1. Remove all items from the appliance.
2. Pull the power plug out, insert and fix it into the power plug hook at the rear or on top of the appliance.
3. Tape parts such as shelves and the door to prevent from falling off while moving the appliance.
4. Move the appliance with more than two people carefully. When transporting the appliance over a long distance, keep the appliance upright.

## Tips for energy saving

Do not place the appliance near cookers, radiators or other heat sources. If the ambient temperature is high, the compressor will run more frequently and for longer, resulting in increased energy consumption.

Ensure that there is sufficient ventilation at the base of the appliance, on the sides of the appliance and at the back of the appliance.

Please also observe the spacing dimensions in the chapter "Installation".

The arrangement of drawers, shelves and trays as shown in the product overview offers the most efficient use of energy and should be retained as far as possible.

To obtain a larger storage space (e.g. for large refrigerated/frozen goods), the middle drawers and shelves can be removed. The top and bottom drawers and shelves should be removed last if necessary.

An evenly filled refrigerator/freezer compartment contributes to optimal energy use.

Allow warm food to cool before placing it in the refrigerator/freezer compartment. Food that has already cooled down increases energy efficiency.

Allow frozen food to defrost in the refrigeration compartment. The coldness of the frozen food reduces the energy consumption in the refrigerator compartment and thus increases the energy efficiency.

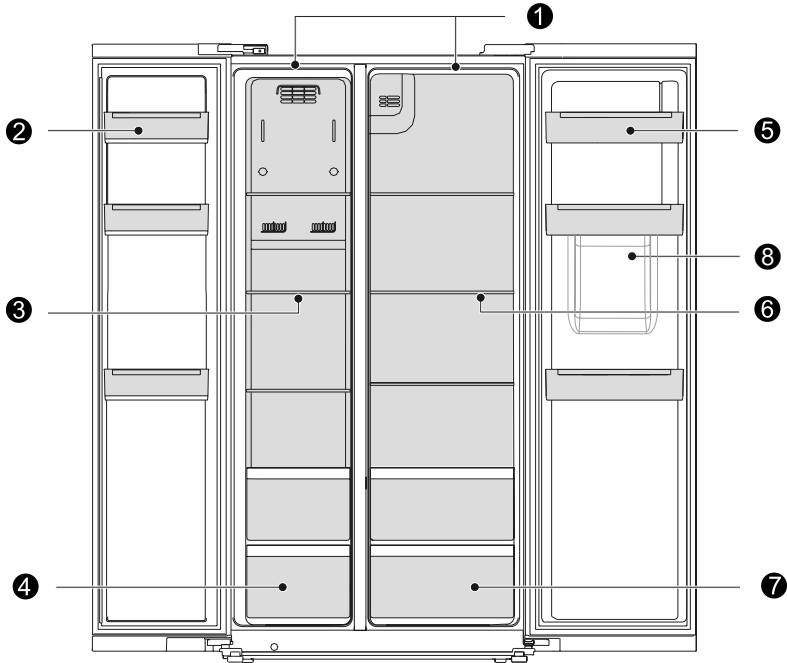
Open the door only as briefly as necessary to minimise cold loss. Opening the door briefly and closing it properly reduces energy consumption.

Setting the temperature no colder than necessary contributes to optimal energy use.

The door gaskets of your appliance must be perfectly intact so that the doors close properly and energy consumption is not increased unnecessarily.

# PRODUCT OVERVIEW

## Parts and functions



- |   |                     |   |                           |
|---|---------------------|---|---------------------------|
| 1 | Led lamp            | 5 | Refrigerator door tray    |
| 2 | Freezer door tray   | 6 | Refrigerator glass shelf  |
| 3 | Freezer glass shelf | 7 | Fruits and vegetables box |
| 4 | Freezer drawer      | 8 | Water tank                |

- > For the most efficient use of energy, please keep the all internal items such as trays, drawers, shelves and ice cube box on the position supplied by manufacturer.
- > This refrigerating appliance needs to be installed independently and cannot be used as a built-in. Otherwise, it will cause problems such the performance and life of the appliance are reduced. And the manufacturer does not provide basic appliance warrant.

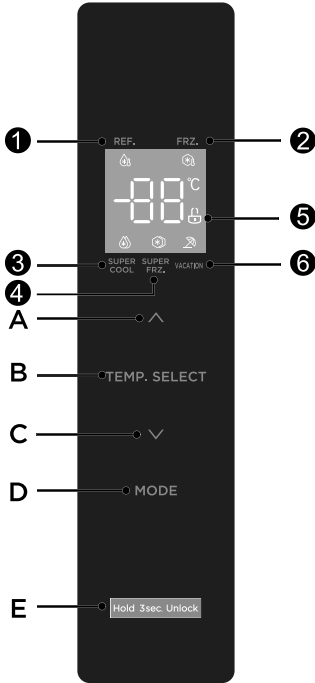
### ATTENTION

**Differences:** Due to technical changes and different models, some of the illustrations in this manual may differ from your model.

# OPERATION INSTRUCTIONS

## Use and functions

### Feature panel



- A Refrigerator
- B Freezer
- C Super cool
- D Super freezer
- E Lock/unlock
- F Vacation

- A Temperature up
- B Temperature range selection
- C Temperature down
- D Mode / function setting
- E Lock / Unlock

### ATTENTION

**Differences:** Due to technical changes and different models, some of the illustrations in this manual may differ from your model.

### Display

When electrify the refrigerator, the display screen will totally display for 3 seconds, meanwhile the starting up bell rings ,then the display screen enters the normal display of operation.It will display the set temperature of both refrigerator and freezer rooms when there is no fault.

## Lock “”/ unlock “”

In the unlocked state, long press the button “Hold 3sec. Unlock” for 3 seconds, enter the “” state;

In the locked state, long press the button “Hold 3sec. Unlock” for 3 seconds, enter the “” state.

---


All the following functions must be operated in the unlocking status.

## Vacation mode “”


Click the button “MODE” to enter the vacation mode. Icon “” lights up, the vacation mode will start after locking the control panel.

under vacation mode, the refrigerating compartment is turned off and temperature area display “--”, the freezer compartment temperature is set at -18°C.


## Super cool mode “”

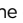

Click the button “MODE” to enter the Super cool mode. Icon “” lights up, the temperature area display 2°C. the Super cool mode will start after locking the control panel. Super cool mode will automatically exit when running for a maximum of 6 hours.

## Super freeze mode “”

Click the button “MODE” to enter the Super freeze mode. Icon “” lights up, the temperature area display -24°C. the Super freeze mode will start after locking the control panel. Super freeze will exit automatically after 24 hours.

## Temperature setting of refrigerating chamber

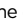

Click the button “TEMP. SELECT” to change the set temperature of refrigerator chamber, the icon “” will be displayed.

Each time click the “” or “”, the set temperature will rise 1°C or will drop 1°C. The temperature setting will take effect after the display panel is locked.

**The setting range of refrigerator chamber is 2°C-8 °C.**

## Temperature setting of freezing chamber

Click the button “TEMP. SELECT” to change the set temperature of freezer chamber, the icon will be displayed.

Each time click the “” or “”, the set temperature will rise 1°C or will drop 1°C. The temperature setting will take effect after the display panel is locked.

**The setting range of freezer chamber is -24 °C--16 °C.**

**Recommended setting: Refrigerated chamber 4°C, freezing chamber - 18°C.**

---

## ATTENTION

The quick-freezing function is designed to maintain the nutritional value of the food in the freezer. It can freeze the food in the shortest time. If a large amount of food is frozen at one time, it is recommended that the user turn on the quick-freezing function and put the food in. At this time, the freezing speed of the freezer compartment is increased, which can quickly freeze the food, effectively lock the nutrition of the food, and facilitate storage.

### Storage upon power failure

In case of power failure, the instant working state will be locked and maintained till re-electrification.

### Door opening tone and alarm

when open the refrigerator doors, the opening tone will play. If the door is not closed in two minutes, the buzzer will sound once every minute until the door is closed.

Long press “^” and “v” 3 seconds can close and turn on the tone when opening the door.

**Disable the door opening alarm sound: Not possible.**

### Error code

The following warnings appearing on the display indicate corresponding faults of the refrigerator. Though the refrigerator may still have cold storage function with the following faults, the user shall contact a maintenance specialist for maintenance, so as to ensure optimized operation of the appliance.

Fault Code	Fault Description
E1	Temperature sensor failure of refrigerating chamber
E2	Temperature sensor failure of freezing chamber
E5	Freezing defrost sensor detection circuit error
E6	Communication error
E7	Ambient temperature sensor error

## How to use the water dispenser (optional)

The water dispenser allows access to chilled water without having to open the refrigerator door.

The number of door openings is thus reduced, less cold air is lost from the refrigerator and you save on electricity costs.

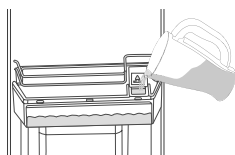


Figure 1



Figure 2

### Filling the water tank (Figure1)

- > Open the cap of the water tank.
- > Fill with pure and clean drinking water.
- > Do not overfill the tank.
- > Close the cap.

### ● ATTENTION

Do not fill water tank with any liquid other than drinking water. Beverages such as fruit juice, carbonated fizzy soda drinks and alcohol are not suitable for use with the water dispenser. If such liquids are used, the water dispenser may malfunction and be damaged beyond repair. Some chemical ingredients and drink additives may also attack and damage the water tank material. The guarantee does not cover such eventualities.

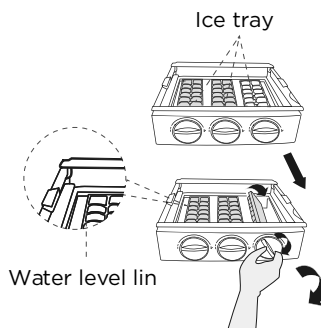
### Using the dispenser (Figure2)

- > Push in the lever of the water dispenser with your glass.
- > Releasing the lever, stops further dispensing of water.
- > Flow rate is dependent on how far the lever is pushed back:  
Fully back = full flow  
Gently back = trickle
- > As the level of water in your cup/glass rises, gently reduce the amount of pressure on the lever to avoid overflow.

## How to make ice (optional)

Gently pull out the ice tray and fill the ice tray with water to the water level line. Then carefully replace the ice tray horizontally.

When the ice cubes are ready, turn the knob clockwise (turn to the end and release), the ice cubes will drop from the ice tray into the ice box.



### ● ATTENTION

In order to make ice cubes quickly, set the freezer to the lowest temperature, or select the Quick Freeze Mode. This will make the temperature of the freezer lower.

Do not over-fill with water. It may become difficult to remove the ice cubes from ice tray and any trickle of water into the ice box will make the ice cubes freeze together.

If the knob is turned before the ice cubes are ready, any remaining water will trickle into the ice box and cause the ice cubes to freeze together.



## Storing food

### Freezer compartment

The freezer compartment is designated for the low-temperature freezing of food, long-term storage of frozen food, and for the production of ice cubes.

Pay attention to the star classifications (4 star, 2 star and 1 star) in the freezer compartment and the resulting storage periods for frozen food.

Do not put fresh and frozen food next to each other. The frozen food may thaw.

When freezing large amounts of fresh food (such as meat, fish or chopped meat), please divide them into several small pieces before putting in, so that they can be quickly frozen and pick up easily.

Abide by the storage times recommended by food manufacturers on the packages, there is no information on the packaging, food should not be stored frozen for longer than three months from the date of purchase.

When purchasing frozen food, make sure that it was frozen at a suitable temperature and that the packaging is not damaged.

Frozen food should be kept in suitable individual packages to ensure that adjacent food cannot be contaminated. Consume thawed and defrosted foods immediately, do not refreeze them.

In case of prolonged power failure or malfunction of the appliance, remove the stored frozen food and check whether they are still edible, then store them in a sufficiently cool place or in another appliance.

To defrost food, remove it from the freezer and let it defrost at room temperature or in the refrigerator. To defrost food quickly, you can use the defrost function on your microwave, for example.

If you only want to defrost part of a pack, remove the portion you need and immediately close the rest of the pack. In this way, you will avoid "freezer burn" and will reduce ice formation on the remaining foods.

### Cooling compartment

To reduce moisture and subsequent ice build-up, never put liquid into the fridge compartment in unsealed containers. Frost tends to concentrate in the coolest parts of the evaporator. Storing uncovered liquids results in a more frequent need for defrosting.

Never put warm foods in the fridge compartment. These should first cool down at room temperature and then be placed so as to ensure adequate air circulation in the fridge compartment.

Foods or food containers should not touch the back wall of the fridge because they could freeze to the wall. Do not keep regularly opening the door of the refrigerator.

Meat and clean fish (packed in a package or plastic foil) can be placed in the fridge compartment, which can be used in 1-2 days.

Fruit and vegetables without packaging can be placed in the part designated for fresh fruit and vegetables

#### ATTENTION

Storage of too much food during operation after the initial connection to power may adversely affect the freezing effect of the refrigerator.

### Storage times and temperature

Note: Overlong storage or storage at inappropriate freezing temperature may cause a quality loss or spoiled foods, which causes food waste, is inedible and may cause food poisoning. The minimum temperature in most cases should be  $-18^{\circ}\text{C}$  or colder. Follow the maximum recommended storage times below:

- > Stew, ice cream, sausages, bread: 2-6 months.
- > Fish, shrimp, lamb, meat: 4-8 months.
- > Vegetables, fruits, poultry, beef: 6-12 months.

# MAINTENANCE AND CLEANING



## CAUTION

Disconnect the appliance from the electrical supply before undertaking any routine maintenance. Allow at least 5 minutes before restarting the appliance, as frequent starting may damage the compressor.

Hold the plug, not the cable, when unplugging the appliance.

Do not scrape off frost and ice with sharp objects. Do not use sprays, electric heaters like heater, hair dryer, steam cleaners or other sources of heat in order to avoid damage to the plastic parts.

Eliminate the dust on the back of the unit at least once in the year to avoid hazard by fire, as well as increased energy consumption.

Check the door gasket regularly to make sure there are no debris. Clean the door gasket with a soft cloth dampened with soapy water or diluted detergent.

The interior of the product should be cleaned regularly to avoid odor.

Use a soft cloth or sponge to clean the inside of the product, with two tablespoons of baking soda and a quart of warm water. Then rinse with water and wipe clean. After cleaning, open the door and let it dry naturally before turning on the power.

For areas that are difficult to clean in the product (such as narrow sandwiches, gaps or corners), it is recommended to wipe them regularly with a soft rag, soft brush, etc. and when necessary, combined with some auxiliary tools (such as thin sticks) to ensure no contaminants or bacterial accumulation in these areas.

Do not use soap, detergent, scrub powder, spray cleaner, etc., as these may cause odors in the interior of the product or contaminated food.

Wipe the outer surface of the product with a soft cloth dampened with soapy water, detergent, etc., and then wipe dry.

Do not use hard brushes, clean steel balls, wire brushes, abrasives (such as toothpastes), organic solvents (such as alcohol, acetone, Isoamyl acetate, etc.), boiling water, acid or alkaline items, which

may damage the fridge surface and interior. Boiling water and organic solvents such as benzene may deform or damage plastic parts.



Do not rinse directly with water or other liquids during cleaning to avoid short circuits or affect electrical insulation after immersion.

## ATTENTION

The appliance shall run continuously once it is started. Generally, the operation of the appliance shall not be interrupted; otherwise the service life may be impaired.

## Defrosting

Although this appliance automatically defrosts, a layer of frost may occur on the freezer compartment's interior walls if the freezer door is opened frequently or kept open too long. If the frost is too thick, choose a time when the supply of food stocks are low and proceed as follows:

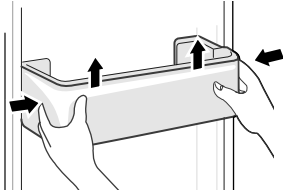
1. Remove existing food and accessories baskets, unplug the appliance from the mains power and leave the doors open. Ventilate the room thoroughly to accelerate the thawing process.
2. When defrosting is completed, clean your freezer as described above.

**CAUTION!** Don't use sharp objects to remove frost from the freezer. Only after the interior completely dry should the appliance be switched back on and plugged back into the mains socket.

### Cleaning of door tray

According to the direction arrow in the figure below, use both hands to squeeze the tray, and push it upward, then you can take it out.

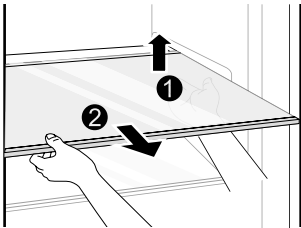
After washing the tray having been taken out, you can adjust its installing height in accordance with your requirement.



### Cleaning of glass shelf

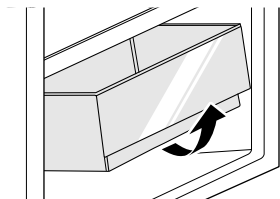
As the innermost part of the refrigerator liner where contacting the shelves has a backstop, you shall raise the shelves upward, then you can be able to take it out.

Adjust or clean the shelves according to your requirement.



### Cleaning the vegetable drawer

1. Remove the contents of the drawer. Hold the handle of the vegetable drawer and pull it out completely until it stops.
2. Lift the vegetable drawer up and remove it by pulling it out.



### Clean up the water dispenser (\*)

**(\*)**: This feature varies depending on the model purchased.

#### Step 1: Remove

Take out the elements of the water box, stick to both sides of the water box elements with both of your hands, and draw out the elements of the water box outwards through 45 degrees above. You can translate the water box (to the side of the user) and get the elements when the elements are out of water valve elements (when you move the box, be sure that there is no water in it.) Take down the seal ring of the water box elements.

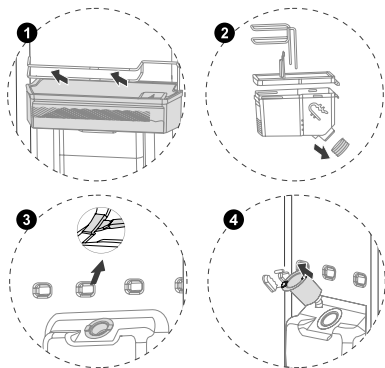
Step to remove the elements of water valve: Use the screwdriver and make the edge directs to the water valve elements and then insert it in the free place that highlights outskirts, rotates the screwdriver clockwise or anticlockwise, with the screwdriver moving, when it tops the penstock, extracts the water valve elements by hands at the direction of above 45° (You can not remove the elements of water valve)

#### Step 2: Clean up

Remove the water box itself, and the water box cover, the seal ring and the water valve elements.

Clean up the elements of the water box with cold or warm water.

Wipe out the water with dry cloth.

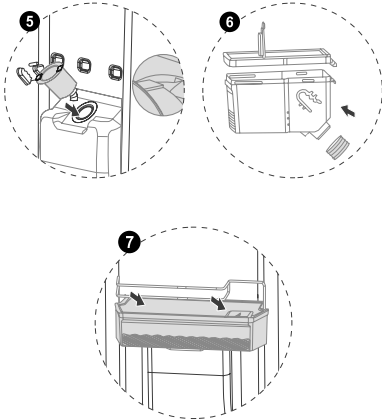


### Step 3: Installation

Installation of water valve elements: Put the guide projecting platform directed to the guide groove, after that, push it downside with 45° slantly at full tilt, until you hear a crack.

Installation of seal ring of the water box: Put the seal ring to the bottom of the water box, and be sure that the seal ring is in place. Avoid wrinkle of seal ring and it's placement in wrong place.

The Installation of water box elements: Keep the hanging slot of the water box elements direct to the hangers on the door liner. The seal ring at the bottom of the box shall directed to the entrance of the water valve elements, insert it to the corresponding position along with the 45° slantly.



### ATTENTION

When you are cleaning the tank and if cleaning solution is used, you should better put the water box to its original position, and fill the water box, then you shall drain 5 to 6 cups of water, in case there is any rudimental dirt of water dispenser after you used cleaning solution.

# TROUBLESHOOTING

The following simple issues can be handled by the user. Please call the after-sale service department if the issues are not solved.

Problem	Possible Causes	Solution
Not operate	<ul style="list-style-type: none"> <li>The power supply is not turned on and the plug is not firmly inserted.</li> <li>Low voltage, power failure or part of the circuit tripped.</li> </ul>	<ul style="list-style-type: none"> <li>Insert the power cord plug firmly.</li> <li>Check the power supply at home.</li> </ul>
Light not on	<ul style="list-style-type: none"> <li>The appliance is not powered on.</li> <li>The light is broken.</li> </ul>	<ul style="list-style-type: none"> <li>Unplug and re-plug the power cord.</li> <li>Replace the light with a new one.</li> </ul>
Fridge/freezer is over-cooling	<ul style="list-style-type: none"> <li>Temperature control is not set correctly.</li> </ul>	<ul style="list-style-type: none"> <li>Set the temperature higher.</li> </ul>
Compressor working for a long time	<ul style="list-style-type: none"> <li>High ambient temperature causing long working time.</li> <li>Putting too much food in at one time.</li> <li>Food is put in before it has cooled down.</li> <li>Opening the door too often.</li> <li>The frost layer inside is too thick.</li> </ul>	<ul style="list-style-type: none"> <li>This is normal.</li> <li>Do not put too much food in at one time.</li> <li>Wait until the food has cooled down before putting it in.</li> <li>Do not open the door too often.</li> <li>Need to defrost.</li> </ul>
Door does not close properly	<ul style="list-style-type: none"> <li>Door is stuck with objects.</li> <li>Too much food in.</li> <li>Door gasket deformed.</li> </ul>	<ul style="list-style-type: none"> <li>Do not put in too much food.</li> <li>Place the appliance stably.</li> <li>Heat the door gasket, then cool it for restoration (with an electrical drier or hot water for heating).</li> </ul>
Outer wall is hot	<ul style="list-style-type: none"> <li>When the appliance is operating, heat is dissipated to the outside through the metal tubes inside the cabinet.</li> <li>Higher ambient temperatures in the summer cause the temperature of the outer wall to rise.</li> </ul>	<ul style="list-style-type: none"> <li>Higher temperature on the outer wall is normal.</li> <li>Increase the heat dissipation space, or put the appliance in a ventilated and cool place.</li> </ul>
Cross or vertical beams are hot	<ul style="list-style-type: none"> <li>There are metal tubes inside the beams, and the heat released from the tubes prevents condensation.</li> </ul>	<ul style="list-style-type: none"> <li>This is normal.</li> </ul>
Odors	<ul style="list-style-type: none"> <li>Spoiled food</li> <li>Food with strong odors</li> <li>The interior compartment is dirty.</li> </ul>	<ul style="list-style-type: none"> <li>Clean and remove any spoiled food.</li> <li>Make sure strong smelling food is wrapped airtight.</li> <li>Clean the interior compartment.</li> </ul>
The actual temperature differs from the set temperature	<ul style="list-style-type: none"> <li>When warm food is put in, the temperature will rise temporarily.</li> <li>After setting a new temperature, it will take some time for the temperature in the compartment to reach the set temperature when the door is not opened.</li> <li>After the temperature stability, the actual temperatures at different locations within the compartment are different, with a deviation of about <math>\pm 3^{\circ}\text{C}</math>.</li> </ul>	<ul style="list-style-type: none"> <li>This is normal.</li> <li>Wait for some time before testing the actual temperature.</li> </ul>
Condensation forms on the outside	<ul style="list-style-type: none"> <li>Condensation may form when the humidity in the room is high.</li> </ul>	<ul style="list-style-type: none"> <li>This is normal. Wipe off the condensation using a dry cloth.</li> </ul>

Problem	Possible Causes	Solution
Condensation forms inside the fridge and drawers	<ul style="list-style-type: none"> <li>The fridge maintains a high humidity to keep vegetables and other food items fresh.</li> <li>Humidity is too high in the room and doors have been opened frequently.</li> <li>The door gasket are not tight.</li> </ul>	<ul style="list-style-type: none"> <li>Wipe off the condensation using a dry cloth.</li> <li>Do not open doors as frequently or do not keep them open too long.</li> <li>Check the door gasket, clean or correct position.</li> </ul>
Frost around the vents	<ul style="list-style-type: none"> <li>Door is not closed properly.</li> <li>The door gasket are not tight.</li> </ul>	<ul style="list-style-type: none"> <li>Make sure food does not block the door.</li> <li>Check the door gasket, clean or correct position.</li> </ul>
Hard to open the door	<ul style="list-style-type: none"> <li>The difference in air pressure between the inside and outside of the compartment may sometimes make it hard to open the freezer door.</li> </ul>	<ul style="list-style-type: none"> <li>Wait a few moments, and then try to open the door slowly.</li> </ul>
Not making ice cubes (Only models with ice maker)	<ul style="list-style-type: none"> <li>The ice making function not turned on.</li> <li>The appliance is not being supplied with water.</li> <li>The water pipe has kinks in it.</li> <li>The water pipe connection is installed incorrectly.</li> <li>Water pressure is too low.</li> </ul>	<ul style="list-style-type: none"> <li>Switch on the ice maker.</li> <li>Check whether the water supply is on.</li> <li>Straighten out the kinks.</li> <li>Check the water connection.</li> <li>Check the pressure of the water supply, or whether the filter is clogged.</li> </ul>

**Certain sounds can be heard during normal use of the refrigerator, which do not affect its correct operation.**

**Sounds, which can be easily prevented:**

- > Noise caused by the appliance which is not level - adjust the position with the adjustable turn-in front feet. Alternatively, place pads made of soft material under the rear rollers, especially when the appliance is placed on tiles.
- > Touching the adjacent piece of furniture - move the refrigerator away.
- > Creaking of the drawers or shelves - take out and put back the drawer or shelf.
- > Sounds of clinking bottles - move bottles apart.

Sounds heard during normal use are mainly due to operation of the compressor (switching on) and cooling, system (thermal expansion and contraction of the radiator caused by flow of the cooling agent).